

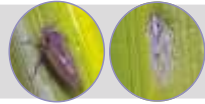
Pexalon™ Application Guidance



Dose rate

Pexalon™ @ 94ml per acre

Brown plant hopper



White backed plant hopper

Target pests



Number of Applications

Apply Pexalon™ only once in crop season

150-200 Litre per acre

Water Volumes



Key Recommendation

- Apply Pexalon™ when you see 5-10 hoppers/hill at active tillering to panicle initiation stage
- Rotate with an effective alternate mode of action molecule 21-25 days later.

Genuinity check of Pexalon™



After downloading "Farmer Connect" app, scan ACF label QR code & Hologram on the Pexalon bottle cap with your mobile phone.



Pexalon™ BE STRONG

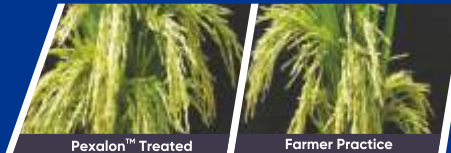
Cleaner, greener and healthier stems



Pexalon™ Treated

Farmer Practice

More productive tillers



Pexalon™ Treated

Farmer Practice

Better grain filling



Pexalon™ Treated

Farmer Practice



Be1st

™ © Trademarks of Corteva Agriscience and its affiliated companies. © 2025 Corteva.

*Always read and follow label directions

facebook.com/CortevaIN
twitter.com/corteva
www.instagram.com/corteva
www.linkedin.com/company/corteva

For Customer Care Call Us On Our National Toll Free Number 1860 – 1800 – 186

www.corteva.in

Prepared to Clinch!



Ahead of the time
Ahead of the world



For more information Scan the QR Code

Pexalon™

PyraXalt™ active

INSECTICIDE



www.corteva.in