

BERRIES

PEST TIMING CALENDAR



Corteva Agriscience™ offers an outstanding lineup of customer-focused products for berry growers that fit well into an Integrated Pest Management (IPM) program.

Success™

Qalcova™ active

INSECTICIDE

Success™ insecticide with Qalcova™ active (spinosad) is a proven insecticide of natural origin that helps producers grow high-quality berry crops. Success provides trusted control of a broad range of pests including blueberry flea beetle, oblique-banded leafroller and spotted wing drosophila with minimal impact to the environment and beneficial insects when used according to the label.

Delegate™

Jemvelva™ active

INSECTICIDE

Delegate™ insecticide with Jemvelva™ active (spinetoram) is a naturally-derived product that is fast-acting against spotted wing drosophila, oblique-banded leafroller and blueberry spanworm with minimal impact on beneficials and the environment. Its unique profile makes it an excellent tool for IPM programs for berry growers.

Entrust™

Qalcova™ active

INSECTICIDE

Entrust™ insecticide with Qalcova™ active (spinosad) is a proven natural insecticide for organic berry growers. Entrust has excellent activity on thrips, leafrollers, blueberry flea beetle and spotted wing drosophila. Entrust is a perfect fit for IPM programs.

Intrepid™

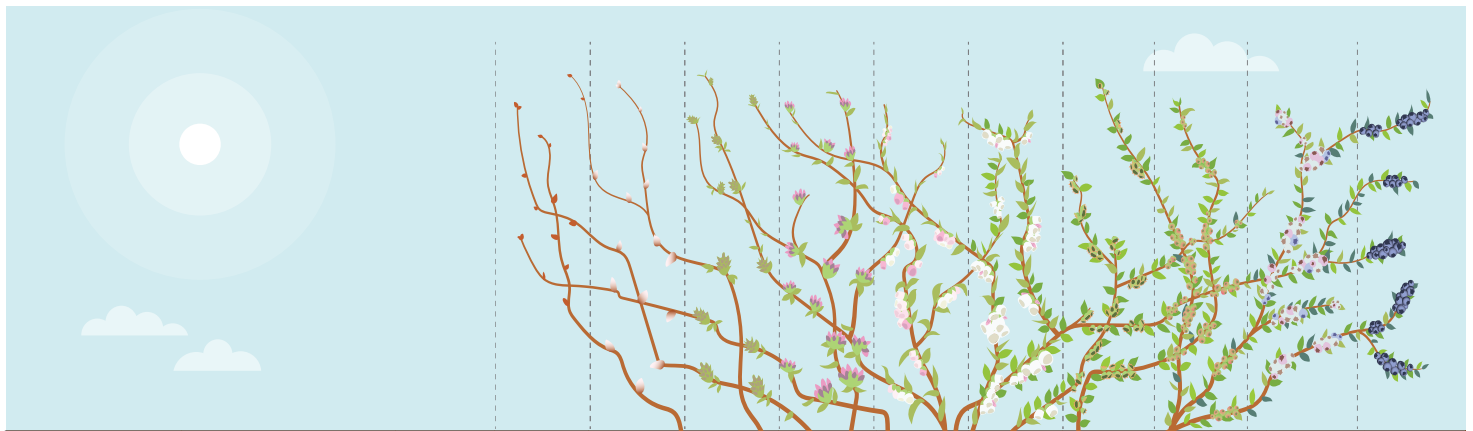
INSECTICIDE

Intrepid™ insecticide is a novel group 18 insecticide that controls pests at early stages to get your berries off to a strong start. It induces a premature molt to control lepidopterous pests which stops feeding within 24 hours. Intrepid delivers both ovicidal and larvicidal activity providing residual control for up to 10 to 14 days after application.

PRE-HARVEST INTERVALS IN BERRIES

(Refer to each product label for crop specific pre-harvest intervals)

Closer™ insecticide with Isoclast™ active	1 day	Delegate™ insecticide	1-3 days	Entrust™ insecticide	1-3 days
Success™ insecticide	1-3 days	Fontelis™ fungicide	0 days	Nova™ fungicide	1-14 days
Tanos™ fungicide	9 days	Lontrel™ XC herbicide	45 days to 10 months	Prism™ SG herbicide	21 days to 14 months
		Salibro™ nematocide with Reklamel™ active	1 day		



BERRIES PEST TIMING CALENDAR		PRE PLANT/ AT PLANT	BUD SWELL TO BUD BREAK	TIGHT CLUSTER	PINK BUD	5% BLOOM	FULL BLOOM	PETAL FALL	GREEN FRUIT	FRUIT COLOURING	HARVEST	DORMANT
INSECTS	CONTROL OPTIONS FOR THIS PEST (ProductGroup)											
Blueberry flea beetle	Entrust [*]5 Success [*]5 Delegate [*]5					1						
Oblique-banded leafroller, Spanworm	Delegate5 Entrust5 Intrepid [*]18 Success5					1						
Spotted wing drosophila	Delegate5 Entrust5 Success5											
Thrips [*]	Delegate5											
DISEASES												
Mummy berry	Fontelis [*]7											
Powdery mildew	Fontelis7 Nova [*]3											
Botrytis	Fontelis7 Tanos [*]11+27											
Caneberry spur blight	Tanos11+27											
WEEDS												
Quackgrass, annual grasses and chickweed	Kerb [*] SC3											
Broadleaf weeds	Lontrel [*] XC4											
Broadleaf and grassy weeds: Redroot pigweed, Lamb's- quarters*, Quackgrass, Foxtail, Barnyard grass	Prism [*] SG2											
Lamb's-quarters, Green foxtail, Volunteer wheat, Wild oats, Volunteer Canola	Steadfast [*] IS2											
NEMATODES												
Root-knot nematode*	Salibro [*]	Refer to product label for application timing.										

* Suppression

¹ Apply only when bees are not visiting the area.

This chart is intended for reference only and not intended to provide information for application. Always read and follow label directions. Chart shows possible pest timing, not spray timing.

For more information visit us at
Horticulture.corteva.ca to find your
Corteva Agriscience™ Horticulture Expert.

Visit us at [Horticulture.corteva.ca](https://horticulture.corteva.ca)