



Proprietary Formulation

With Effective Weed Control & Excellent Crop Safety

Features

- Proprietary acetochlor (Group 15) formulation for residual control of tough-to-control weeds
- Versatility in application timing
- Drives to the soil from the leaf surface with proprietary encapsulation, creating strong residual control
- Encapsulated acetochlor for excellent crop safety
- Great handling and tank-mix compatibility

Benefits

- Residual control of 20 broadleaf weeds and grasses, including Palmer amaranth and waterhemp
- Reliable product and performance leads to confidence in resistance management
- Fits perfectly into a herbicide program approach with other Corteva Agriscience™ soybean herbicides such as Sonic®, Trivence® and Enlist One® herbicides
- Excellent crop safety leads to higher yield potential
- Wide window of application to help navigate challenging weather conditions

Plantback

Immediate plantback with no restrictions after previously treated crop lost: field corn, seed corn, silage corn, popcorn, cotton, milo (sorghum)², peanut, or soybean.

See label for complete information on additional crops and rotational crop restrictions.

² When replanting milo (sorghum) use only seed properly treated with seed protectant or safener.

Enversa™ herbicide is an encapsulated Group 15 residual herbicide with a proprietary formulation that provides powerful control of 20 of the toughest broadleaf and grass weeds. Enversa is designed to drive to the soil and provide lasting residual control.

Enversa is a new solution in the Corteva Agriscience portfolio for residual control on broadleaf and grass weeds. In addition to strong broad-spectrum weed control, Enversa will offer farmers versatility to use in multiple crops and is a great tank mix option as part of a program approach to resistance management. **Enversa is the preferred residual tank-mix partner with Enlist One® herbicide.**

Farmers will have a wide application window to apply Enversa, giving them application timing flexibility. The excellent crop safety in Enversa will help optimize yield potential, while delivering outstanding tank-mix compatibility.

Application Recommendations

Application Rate: 3 pts/A

Spray Application Volume:

Postemergence: 10–30 gal/A

Proposed Application Timing:

Corn: postemergence up to 30 inches¹

Cotton: preplant up to first bloom

Sorghum: preplant up to 11"

Soybean & Peanut: preplant up to R2

Sugar beet: postemergence from 2-leaf to 8-leaf

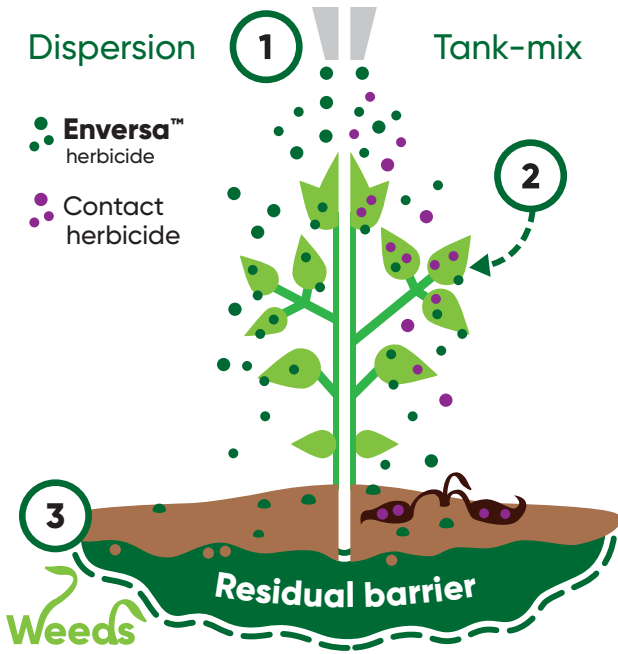
¹ Can be used preplant in labeled states

- For use on corn (field, production seed, silage and popcorn), cotton, peanuts, sorghum, soybeans and sugar beets
- DO NOT exceed a total of 3 applications of Enversa per season
- DO NOT exceed a total of 4 qts/A of Enversa herbicide per season when making multiple applications

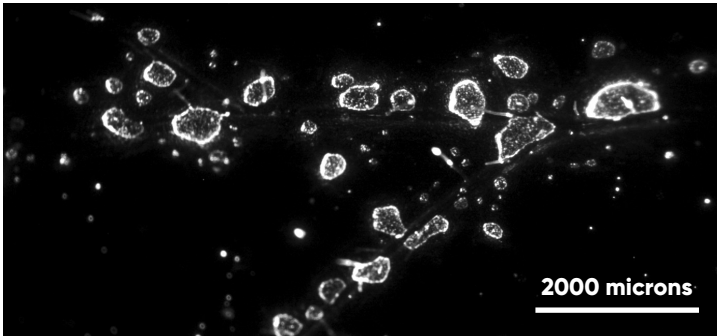
Weed control (pre or postemergence applications)

C - Controlled **PC** - Reduced competition

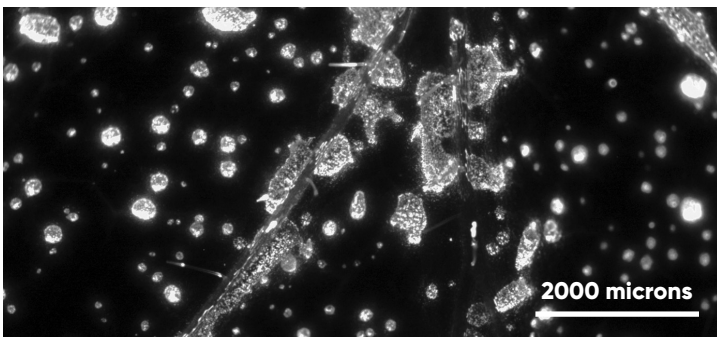
Grasses			
C Barnyardgrass	C Goosegrass	PC Panicum (Texas)	C Sprangletop (red)
C Crabgrass	PC Johnsongrass (seedling)	C Rice (red)	PC Wheat (volunteer)
C Crowfootgrass	PC Millet (foxtail)	PC Sandbur (Grassbur)	C Witchgrass
C Cupgrass (prairie)	PC Oat (wild)	PC Shattercane (Wild cane)	
C Foxtail (giant, green robust purple, robust white, yellow)	C Panicum (browntop, fall)	C Signalgrass (broadleaf)	
Broadleaves			
PC Beggarweed (Florida)	C Henbit	C Purslane	PC Starbur (bristly)
C Carpetweed	C Lambsquarters	C Pusley (Florida)	C Waterhemp
C Galinsoga	C Nightshade (black, hairy)	PC Sida (prickly; Teaweed)	
PC Groundcherry (cutleaf)	C Pigweed (Amaranthus spp.)	PC Smartweed	



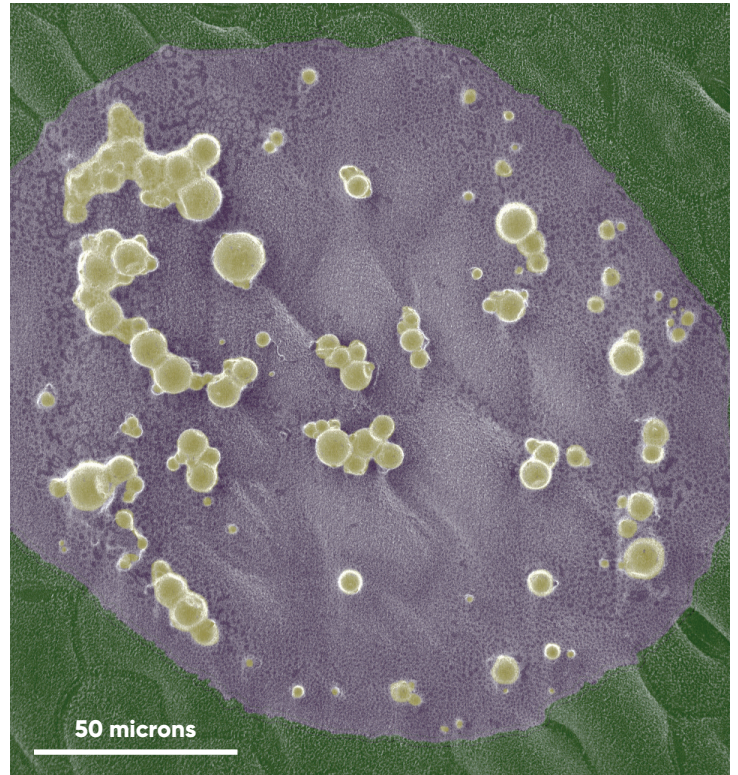
- 1 Leaf is sprayed with Enversa™ herbicide alone (left) or combination with a tank-mix product (right)
- 2 Droplets on the leaf hold tank-mixed product and Enversa
- 3 Enversa microcapsules move from the leaf surface & drives to the soil, resulting in a residual barrier around the plant



Spray droplets of Enversa showing only minor amount of solution retained on leaf surface demonstrating the formulation driving to the soil.



Spray droplets of tank mix of Enversa and glyphosate showing more spray droplets staying on the leaf with the tank-mix vs. Enversa alone (image above).



High magnification of an individual spray droplet residue of Enversa + glyphosate solution on leaf surface.

- Enversa microcapsules
- Glyphosate solution
- Leaf surface

Visit us at corteva.us/Enversa

©™ Trademarks of Corteva Agriscience and its affiliated companies.

This reference guide is not intended as a substitute for the product label for the product(s) referenced herein. Product labels for the above product(s) contain important precautions, directions for use, and product warranty and liability limitations, which must be read before using the product(s). Applicators must be in possession of the product label(s) at the time of application. Always read and follow all label direction and precautions for use when using any pesticide alone or in tank-mix combinations.

Not all products are registered for sale or use in all states or countries. Enversa is not available for sale, distribution or use in Nassau and Suffolk counties in the state of New York. Contact your state pesticide regulatory agency to determine if a product is registered for sale or use in your area. Enlist One herbicide is the only 2,4-D product authorized for use in Enlist crops. Always read and follow label directions. ©2024 Corteva. 018408-1 COR (04/24)

