

Kyro™ herbicide is a ZC formulation which is a mixed formulation of Capsule Suspension (CS) and Suspension Concentrate (SC) and is a stable aqueous suspension of microcapsules and solid fine particles, each of which contains one or more active ingredients. The formulation is intended for dilution into water prior to spray application.

Application recommendations:

Application Rate: 35-60 fl oz/A

Spray application volume:

Post: 10 - 30 gal/A

ZC formulation advantages

- Improved handling over wide temperature range
- Provides crop safety (through microencapsulation)
- Good bio-efficacy with multiple herbicide active ingredients in a pre-mix formulation

Kyro Appearance & dispersion (after pouring in water)

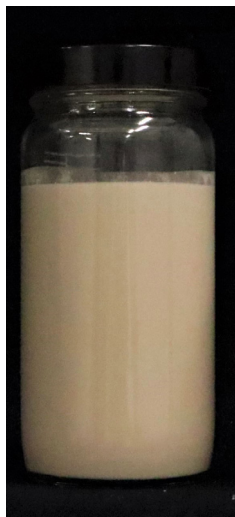


Figure 1: Formulation



Figure 2: Dilution in water without agitation



Figure 3: Dilution in water after agitation

Kyro herbicide (figure 1) rapidly forms dispersed particles when added to water without agitation (figure 2).

Mild agitation is required to form a stable and uniform suspension (figure 3).

Unused Kyro should be stored in its original package with the cap tightly closed. Kyro should remain free-flowing in the package under typical storage conditions.

General Mixing Steps – Water as Carrier

- 1. Read Labels:** Read all labels carefully. Contact manufacturers if you have any questions
- 2. Shake Liquids:** Shake all containers with liquids before adding to ensure thorough mixing of the formulation
- 3. Add Water:** Fill tank with 50% of the required water volume
- 4. Agitate:** Start agitation when the tank is half full – before adding the first product. Continue agitation through the mixing process
- 5. Add in Order:** Add products to the tank in the order outlined in the Liquid Carrier section on the next page
- 6. Wait & Check:** Wait 3–5 minutes after adding dry formulations before liquid formulation additions
- 7. Add Water:** Add remaining water to the tank
- 8. Measure pH:** Measure the pH

Maintain constant agitation during tank-mix preparation/application and allow enough time for each product to fully disperse prior to adding the next product. If water is cold, products will require additional time to disperse.



Liquid Carrier

1. **Tank half-full with water**
2. **Begin agitation**
3. **Pre-slurry Water-Soluble Packets (WSP)**
4. **Wettable Powders (WP)/Dry Flowables (WDG, WG)**
 - » Accent® Q herbicide
 - » Basis® Blend herbicide
 - » Realm® Q herbicide
 - » Resolve® Q herbicide
 - » Revulin® Q herbicide
 - » Steadfast® Q herbicide
5. **Water Conditioners**
 - » AMS
 - » AMS solution
6. **Compatibility Agent (if needed)**
7. **Capsule Suspension (CS) or ZC (CS + SC)**
 - » FulTime® NXT herbicide (CS)
 - » Kyro™ herbicide (ZC)
 - » Resicore® REV herbicide (ZC)
8. **Suspension Concentrate (SC), Suspension Emulsion (SE) or Liquid Flowables**
 - » Keystone® NXT herbicide brands (SE)
 - » Resicore® herbicide (SE)
 - » SureStart® II herbicide (SE)
 - » Liquid atrazine (use a compatibility agent if needed, prior to the addition of liquid atrazine)
9. **Emulsifiable Concentrate (EC)**
 - » Surpass® NXT herbicide
10. **Soluble Liquids (SL)**
 - » Glyphosate products
11. **COC, NIS, other adjuvants**
12. **Ammonium Thiosulfate (ATS)**
13. **Micronutrients (dilute 1:1 with water)**
14. **Top off with water**

Spray tank and equipment cleaning recommendations

After making an application of Kyro herbicide, the entire spray system, including tank, pump, lines and spray boom, should be completely and immediately drained.

1. Drain any remaining spray mixture from the application equipment, then wash out tank, boom and hoses with clean water. Drain again.
2. Hose down the interior surfaces of the tank while filling the tank 1/2 full of water.
3. Add commercial tank cleaner, such as household ammonia, at manufacturer's recommended rate. Recirculate for 10 - 20 minutes and spray out the mixture through the boom.
4. Remove all spray nozzles and screens and clean separately.
5. Thoroughly clean exterior surfaces of spray equipment.

Note: Rinsate may be disposed of onsite according to label use directions or at an approved waste disposal facility. Reduced results may occur if water containing soil is used, such as visibly muddy water or water from ponds and ditches that is not clear.

®/™ Trademarks of Corteva Agriscience and its affiliated companies.

FulTime® NXT, and Keystone® NXT are Restricted Use Pesticides.

This reference guide is not intended as a substitute for the product label for the product(s) referenced herein. Product labels for the above product(s) contain important precautions, directions for use, and product warranty and liability limitations, which must be read before using the product(s). Applicators must be in possession of the product label(s) at the time of application. Always read and follow all label direction and precautions for use when using any pesticide alone or in tank-mix combinations.

Not all products are registered for sale or use in all states. FulTime NXT, Keystone NXT, Kyro, Resicore, Resicore REV, SureStart II and Surpass NXT are not available for sale, distribution or use in Nassau and Suffolk counties in the state of New York. Contact your state pesticide regulatory agency to determine if a product is registered for sale or use in your state. Always read and follow label directions.

©2025 Corteva 027708 COR(02/25)